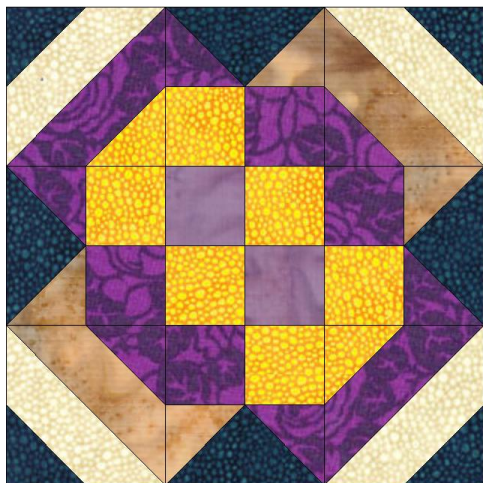


Judy - Block 2

You might have noticed that last month, Denise, Sheryl and Susan had fancy pages and happy stories. I'm a plain Jane kinda girl. My block is . . just my block. No name, no story, nothing pretty on the page . . except my block! :)



All of the blocks in the Christmas Town Sampler should finish at 12".

Because so many are using so many different fabrics, instead of saying "Fabric 1" or "Fabric 2", I'll just say "where I used blue . . ." and you can make any adjustments to fabric placement that you desire.

Cutting Instructions:

Where I used **Yellow**:
Cut 8 - 2-1/2" squares.

Where I used **Lavender**:
Cut 2 - 2-1/2" squares.

Where I used **Purple**:
Cut 1 - 4-7/8" square.
Cut 6 - 2-1/2" squares.
Cut 2 - 2-7/8" squares. Cut each on the diagonal once to yield 6 triangles.

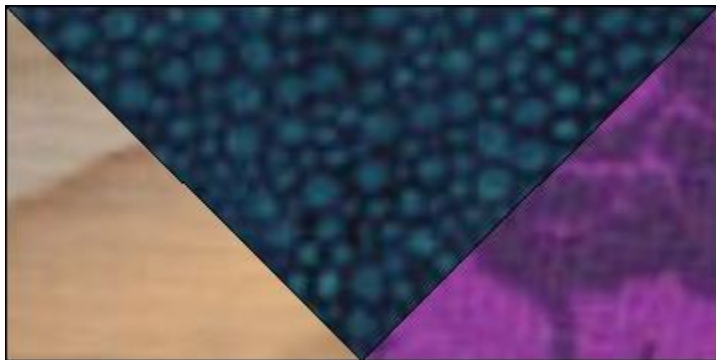
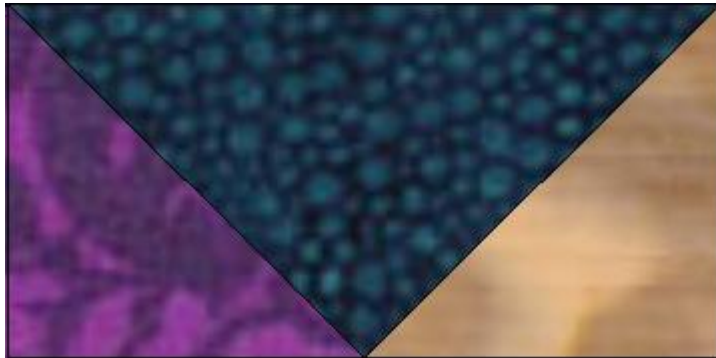
Where I used **Tan**:
Cut 1 - 4-7/8" square.
Cut 2 - 2-7/8" squares. Cut each on the diagonal once to yield 4 triangles.

Where I used **Blue**:
Cut 4 - 2-1/2" squares.
Cut 1 - 5-1/4" square. Cut on the diagonal twice to yield 4 triangles.

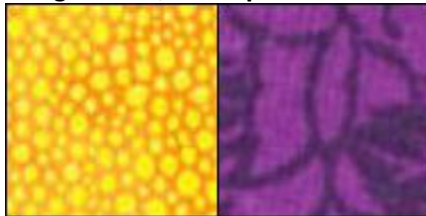
Where I used **Ecrú**:
Cut 2 - 4-7/8" squares.

Construction:

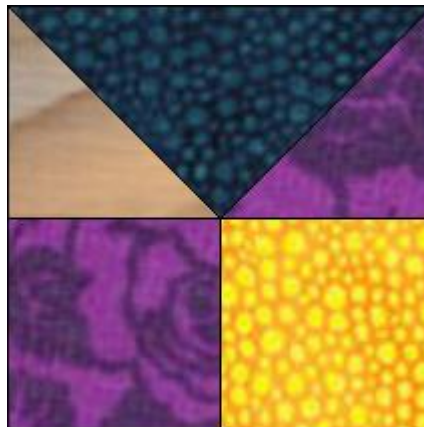
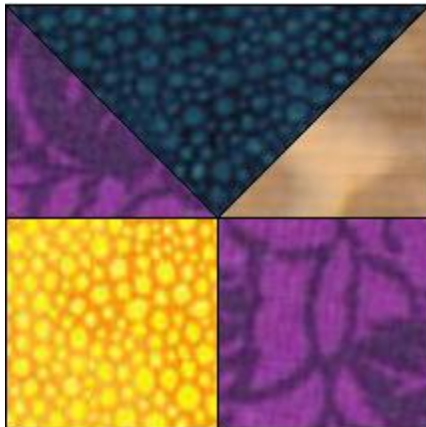
Using the **Blue** triangles and the **Tan** and **Purple** Triangles, make 2 of each of the flying geese shown below. These should measure 2" x 4" finished or 2-1/2" x 4-1/2" unfinished.



Using the 2-1/2" **Purple** and **Yellow** squares, make 4 of the following:

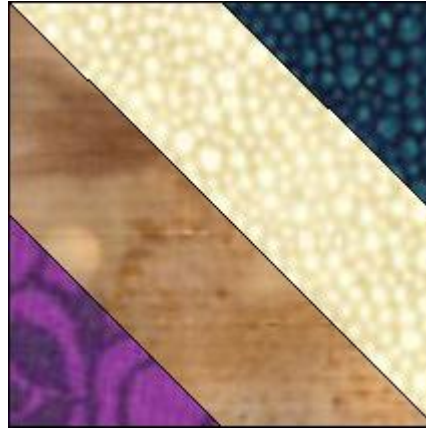


Sew the **Purple/Yellow** squares section to the bottom of the flying geese as shown below. Make 2 of each and **pay careful attention to where the fabrics are placed.**

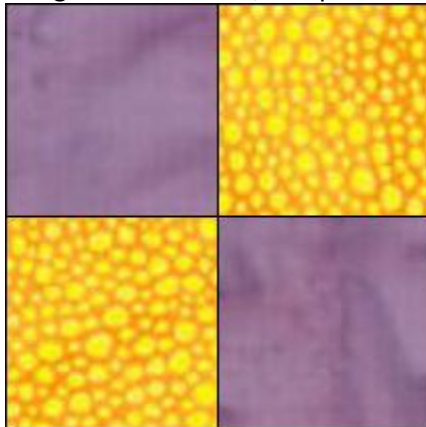


For the corner pieces, either use the piecing directions below or use the paper piecing template [here](#).

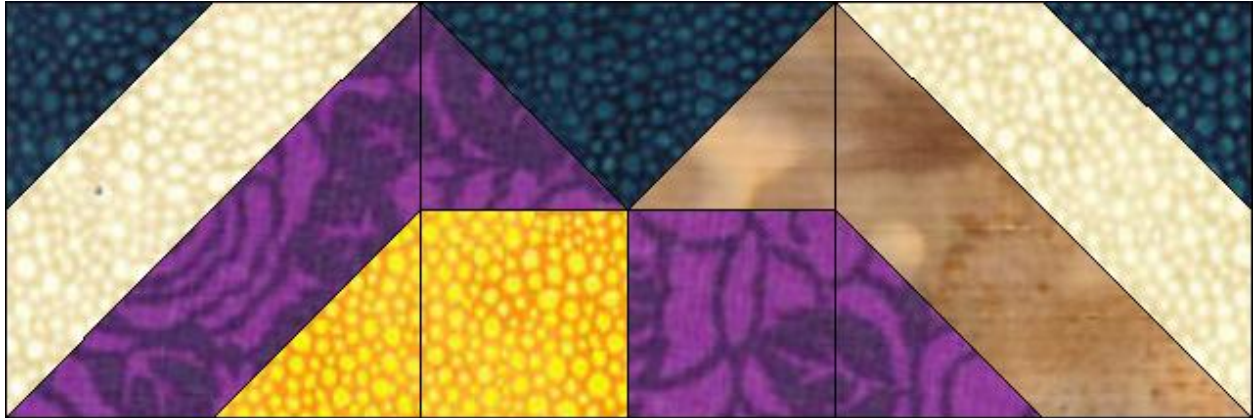
Using the **Ecrú** and **Tan** 4-7/8" squares, make two half square triangles. Using the **Ecrú** and **Purple** 4-7/8" squares, make two half square triangles. Square them up to 4-1/2". Using the **Blue** 2-1/2" squares, draw a diagonal line across each. Place them on one corner of the half square triangles, next to the **Ecrú** fabric and sew on the drawn line. Flip and press. On the other end of the **Ecrú/Purple** half square triangle, do the same thing with the **Yellow** 2-1/2" square. On the other end of the **Ecrú/Tan** half square triangle, do the same thing with the **Purple** 2-1/2" square.



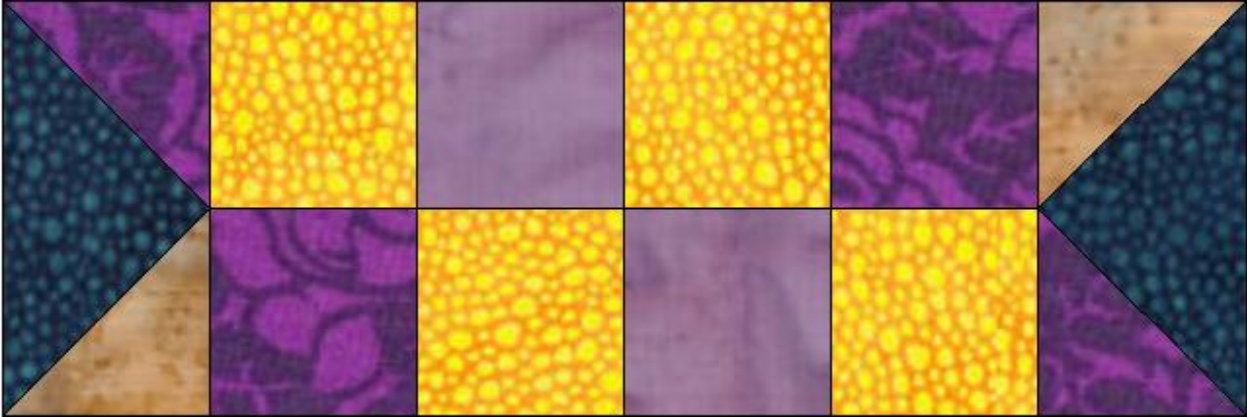
Using two **Yellow** 2-1/2" squares and two **Lavender** 2-1/2" squares, make one four patch.



Sew the pieces together to make the top and bottom sections of the block. Make two. **Pay careful attention to the colors and where they are being placed.**



Sew the following pieces together to make the center portion of the block.



Sew the sections together to complete the block.