

Blueberry Hill - 79" x 99" - January 2012 Color Palette Challenge

Blocks: 10" Finished



NOTES TO READ BEFORE YOU BEGIN:

1. The border fabric requirements are listed separately from the fabric requirements for the main part of the quilt. This gives the option of using my border or any other border you choose, or no border at all. If the border as shown will be used, go to the border section below and add the border yardage to the yardage for the blocks only.
2. For the flying geese both in the blocks and in the border, the yardage given is for using Triangulations paper pieces, where a square is cut into four triangles and using one of those for the larger part of the unit. A smaller square is cut on the diagonal once to yield two triangles - one for each side of the larger section. If you prefer to make your flying geese using a different method, please adjust those yardage requirements accordingly. (See step 6 and the Border)

Binding Yardage - 7/8 yard

Fabric Yardage (For Blocks Only! Does not include border yardage):

Fabric 1 (Beige) - 1-1/8 yards (See Note Below)

Fabric 2 (Lt. Green) - 1 yard

Fabric 3 (Med. Green) - 3/8 yard

Fabric 4 (Aqua) - 1-7/8 yards (See Notes Below)

Fabric 5 (Navy) - 5/8 yard

Fabric 6 (Burgundy) - 1/2 yard

Fabric 7 (Black) - 3/8 yard

Fabric 1

Cut 12 - 3" strips. Cut into 136 - 3" squares. Cut each on the diagonal once to yield 2 triangles (272 total) (H) See NOTE above before cutting these!

Fabric 2

Cut 9 - 2-5/8" strips. Cut into 72 - 2-5/8" x 4-1/2" rectangles (A)

Cut 2 - 2-1/8" strips. Cut into 20 - 2-1/8" squares (J)

Fabric 3

Cut 2 - 4-3/8" strips. Cut into 18 - 4-3/8" squares (C)

Fabric 4

Cut 3 - 4-1/2" strips. Cut into 18 - 4-1/2" squares. Cut these on the diagonal twice to yield 4 triangles per square (72 total) (B)

Cut 4 - 4-7/8" strips. Cut into 34 - 4-7/8" squares. Cut each on the diagonal twice to yield 4 triangles (136 total) (G) See NOTE above before cutting these!

Cut 5 - 3-3/8" strips. Cut these into 48 - 3-3/8" squares. Cut each on the diagonal once to yield 2 triangles (96 total) (I)

Cut 2 - 5-7/8" strips. Cut these into 10 - 5-7/8" squares. Cut on the diagonal once to yield 2 triangles (20 total) (K)

Fabric 5

Cut 9 - 2-1/8 strips. Cut into 72 - 2-1/8" x 4-3/8" navy rectangles (D)

Fabric 6

Cut 4 - 3" strips. Cut into 48 - 3" squares (F)

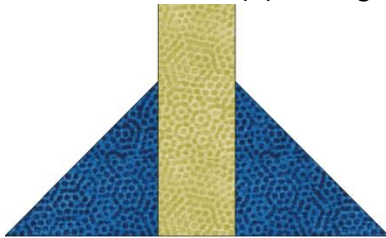
Fabric 7

Cut 4 - 2-1/8" strips. Cut into 72 - 2-1/8" squares (E)

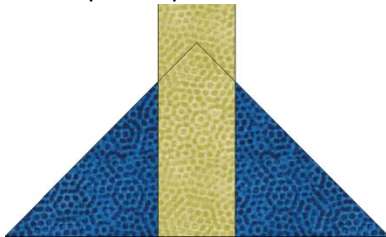
Block 1 - Make 18



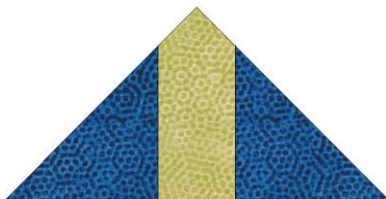
1. Sew the Fabric 2 (A) rectangles to the Fabric 4 (B) triangles. Sew the triangles as shown below.



Then square up the unit:



To the finished size:



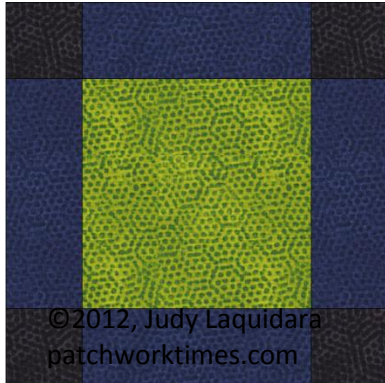
2. Sew 36 of the Fabric 5 rectangles (D) to opposite sides of the Fabric 3 squares (C). Make 18.



3. Sew the Fabric 7 squares (E) to Fabric 5 rectangles (D). Make 36.



4. Sew the sections from Step 3 to the top and bottom of the unit from Section 2 to create the center of the block. Make 18.



5. Add the triangles from Step 1 to opposite sides, press and then add two more triangles to the remaining two sides to complete the block. Make 18.

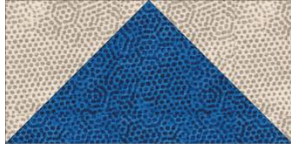
Block 2 - Make 10



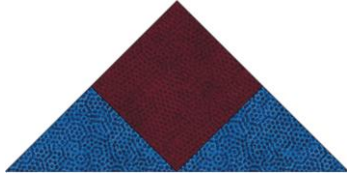
Block 3 - Make 7



6. For Blocks B & C combined, 136 flying geese are needed. Use your favorite method to make these, using (G) and (H) pieces. They need to finish at 1-3/4" x 3-1/2".



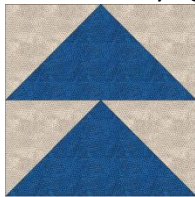
7. Using a Fabric 6 square (F) and Fabric 4 triangles (I), make 48 of the following units.



8. Draw a diagonal line across the Fabric 2 squares (J). Place the square on the end of the Fabric 4 triangle (K). Sew on the drawn line, flip, and press to create the following unit. Make 20.



9. Sew the flying geese units from Step 6 together. Make 68 units.



10. Sew those units together to make 34 units.



11. Sew those units together to create the center of the blocks. Make 17.



12. Add the side components. Look at the diagrams for Blocks 2 and 3. Add the correct triangles to opposite sides. Press and add the two remaining triangles.

13. Sew the blocks together as shown in the diagram. Place Block 2, with the Fabric 2 triangle facing the border, on the perimeter as shown. Block 3, with the Fabric 7 squares, will be placed in the center of the quilt.



Pieced Border Blocks: 4" finished blocks.

Fabric Requirements for Borders:

Fabric 2 - 1-3/8 yards

Fabric 3 - 3/4 yard

Fabric 4 - 1/2 yard

Fabric 5 - 2-1/4 yards

Fabric 6 - 7/8 yard

NOTE: Make 54 Flying Geese using Fabrics 2 and 4 and make 62 Flying Geese using Fabrics 3 and 5.

To make these, the flying geese finish at 2" x 4" and for each block, make one unit with Fabrics 4 and 2, and one unit with fabrics 5 and 3. Use your favorite method to make these. If you need measurements, based on adding a small triangle to each side of a larger triangle:

Fabric 2 - Cut 5 - 2-7/8" strips. Cut these into 54 - 2-7/8" squares. Cut each on the diagonal once to yield 2 triangles (124 total)

Fabric 3 - Cut 5 - 2-7/8" strips. Cut these into 62 - 2-7/8" squares. Cut each on the diagonal once to yield 2 triangles (124 total)

Fabric 4 - Cut 2 - 5-1/4" strips. Cut these into 14 - 5-1/4" squares. Cut each on the diagonal twice to yield 4 triangles (56 total but you'll only need 54)

Fabric 5 - Cut 3 - 5-1/4" strips. Cut these into 16 - 5-1/4" squares. Cut each on the diagonal twice to yield 4 triangles (64 total but you'll only need 62)

Make 54 units as shown below.



For the end units: Make 4 of each

Fabric 2 - Cut 1 - 2-1/2" strip. Cut it into 8 - 2-1/2" squares.

Fabric 4 - Cut 1 - 2-1/2" strip. Cut it into 8 - 2-1/2" x 4-1/2" rectangles

Draw a diagonal line across the Fabric 2 squares. Lay them on top of the Fabric 4 rectangles, paying careful attention to which end you're placing the squares on and the direction of the squares. Sew on the drawn line, flip and press. Attach this unit to a Fabric 3/5 flying geese unit.

Left side:



Right side:



For the corner units. Make 4



Fabric 3 - Cut 4 - 4-1/2" squares

Fabric 4 - Cut 4 - 2-1/2" squares

Draw a diagonal line across the Fabric 4 squares. Place a square on one corner of each Fabric 3 square. Sew on the diagonal line, flip and press.

Border Chart:

Fabric	Sides	Top & Bottom
Fabric 2	1-1/2" x 70-1/2"	1-1/2" x 52-1/2"
Pieced (Pay attention to the end blocks on each border)	16 + 2 end pieces - 4" finished	11 + 2 end pieces + 2 corner blocks (pay attention to the orientation)
Fabric 5	1-1/2" x 80-1/2"	1-1/2" x 62-1/2"
Fabric 2	1-1/2" x 82-1/2"	1-1/2" x 64-1/2"
Fabric 6	3" x 84-1/2"	3" x 69-1/2"
Fabric 2	1-1/2" x 89-1/2"	1-1/2" x 71-1/2"
Fabric 5	4-1/2" x 91-1/2"	4-1/2" x 79-1/2"